

MONTHLY MEMBERSHIP PROGRESS REPORT

LOCATION INDIA

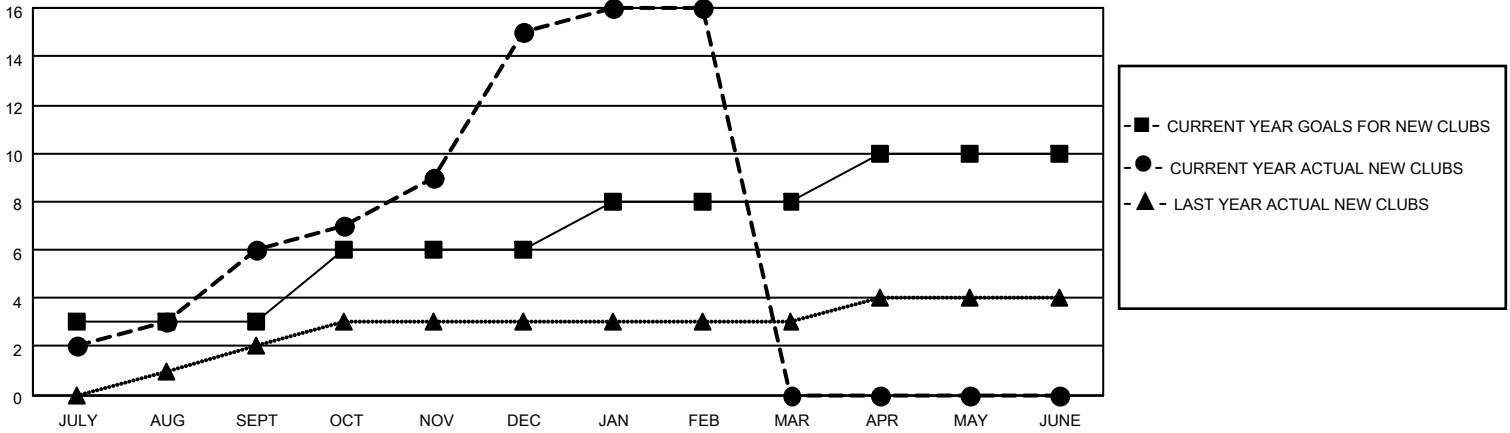
District 321 F

Results as of: 2/28/2021

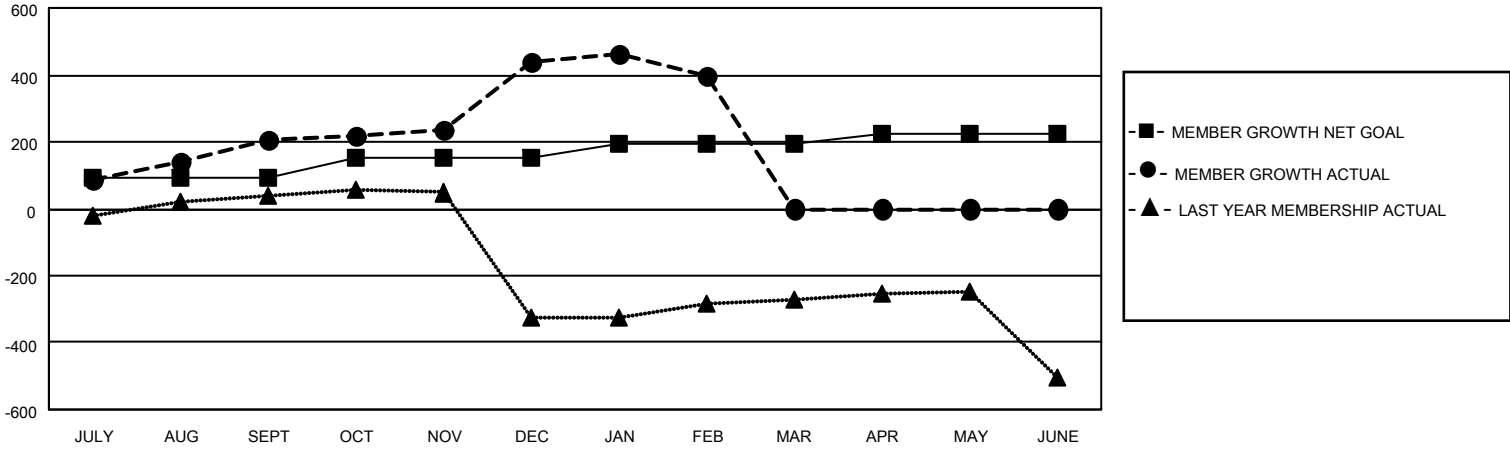
Clubs			
RESULTS FOR 2020-2021			
QUARTER	NEW CLUB GOAL	NEW CLUBS	DROPPED CLUBS
JULY/AUG/SEPT	3	6	0
OCT/NOV/DEC	3	9	0
JAN/FEB/MAR	2	1	9
APR/MAY/JUNE	2	0	0

Members			
RESULTS FOR 2020-2021			
QUARTER	MEMBER GROWTH NET GOAL	MEMBER GROWTH ACTUAL	DROPPED MEMBERS ACTUAL (including transfers)
JULY/AUG/SEPT	90	337	80
OCT/NOV/DEC	60	403	155
JAN/FEB/MAR	45	105	144
APR/MAY/JUNE	30	0	0

GOALS AND ACTUAL NEW CLUBS CUMULATIVE



GOALS AND ACTUAL MEMBERS CUMULATIVE



DROPPED CLUBS: 9

81 CLUBS OF 150 ADDED 1 OR MORE NEW MEMBERS

GENDER DISTRIBUTION

MALE 3,564 (87.05%)
 FEMALE 530 (12.95%)

DROPPED MEMBERS

[CLICK HERE FOR CUMULATIVE MEMBERSHIP DATA](#)

DECEASED	24
CLUB CANCELLED	95
OTHER	260
TOTAL	379

TOTAL FAMILY UNIT MEMBERS	1,266
FAMILY MEMBERS PAYING HALF DUES	811